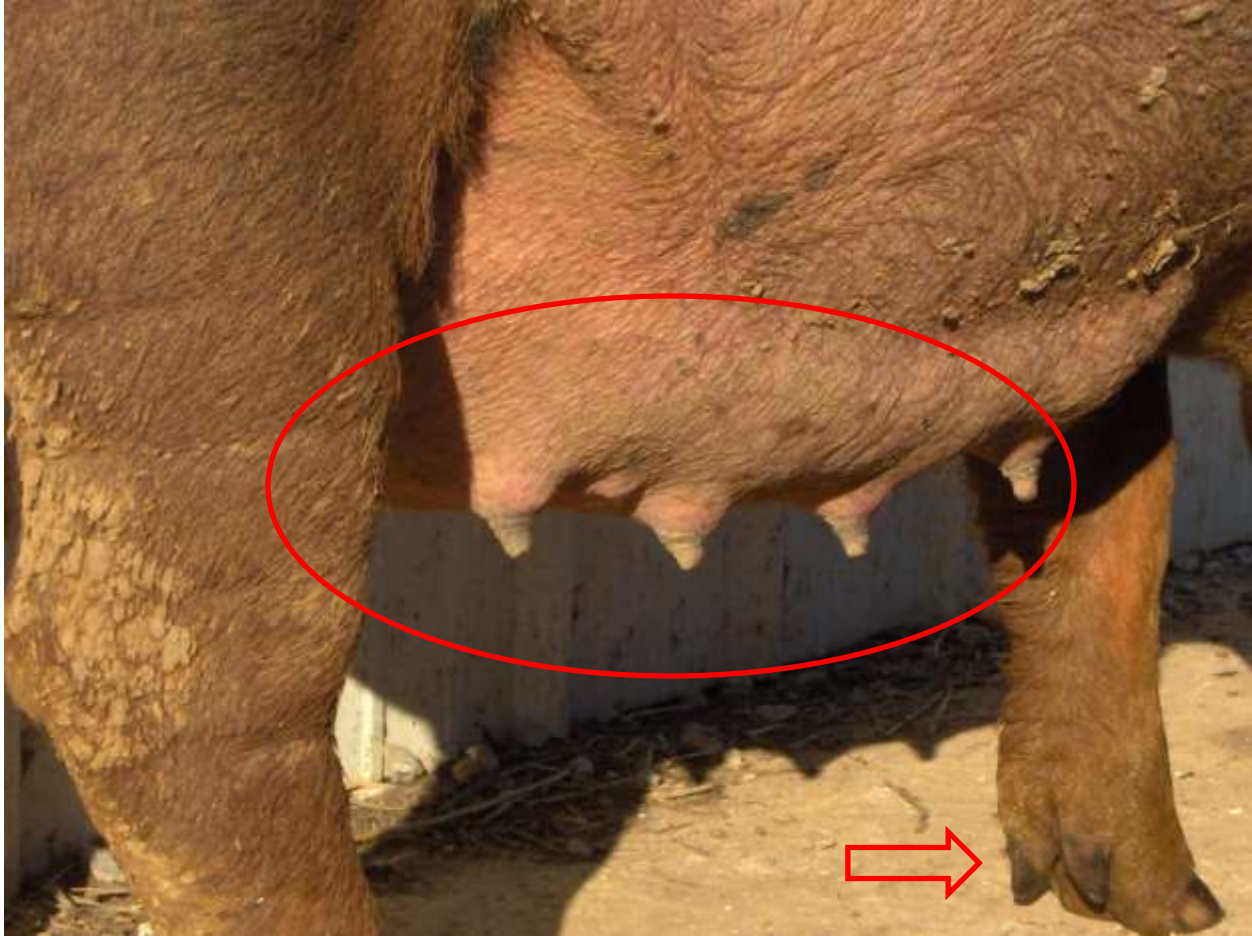


Close to Farrowing

- One of the signs if close to farrowing.
- There are many names. The bag, teats, mammary glands, will drop significantly and be easily visible thru the rear legs.



Close to Farrowing

- The teats will drop and become larger as they prepare for nursing.
- Usually occurs a few days and up to 2-3 weeks prior to farrowing.
- The teats will continue to enlarge.
- Sometimes the farrowing date can be confirmed by expressing milk from a teat but not always. Caution should be used if attempting.
- Dates or time frames are not definite and are only an estimate as each hog will present differently and time frames may change with multiple farrowings.
- Notice with the additional weight of pregnancy the dew claws are still off the ground. This hog has thick, strong and straight legs.



Close to Farrowing

Per the breeder, this sow is 15 days from farrowing. The vulva is becoming enlarged and softer as the birth canal prepares for delivery. Each gilt or sow may present slightly different. Some swell more, some less and each farrowing or delivery for any sow may also be slightly different.